



Digital resources that can travel well? Yes!

**Barbora Grečnerová, Dům zahraničních služeb
Czech Republic**

barbora.grecnerova@naep.cz

Find resources

e.g.: geometry, language,...

Languages

Subjects

Search only travel well resources

Find by tags

e.g.: design, media, ...

Biologia Celular biology Biosintese celebrate chemistry climate change Deutsch drill electricity eminent energy eqnet europe exercise film director fisiologia interactive internet music neurónio physics picture Plantas Promethean quiz simulations Simulering Sistema Nervoso translation needed

travelwell

Highlighted resources

Energy Skate Park

Forces and Motion

Quantum Bound States

Circuit Construction ...

Creating an OpenID - Click Here

Login

- ★ Create account
- ★ Forgot your password?

Travel well - Crossborder resources

Veterkaarten tot 5

JClıc : Sudokupuzzels

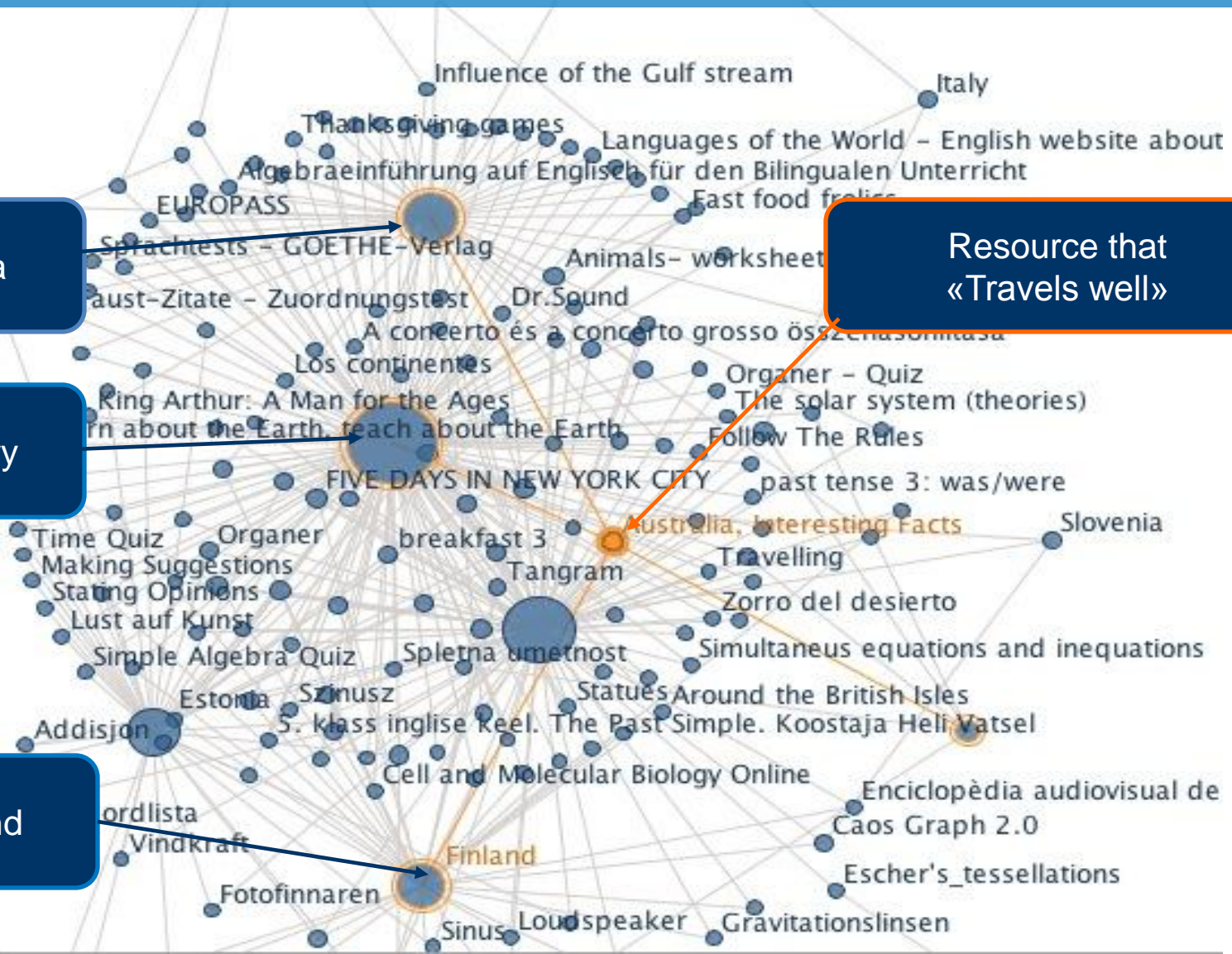
Getalbeelden tot twin...

Merkwaardige producte...

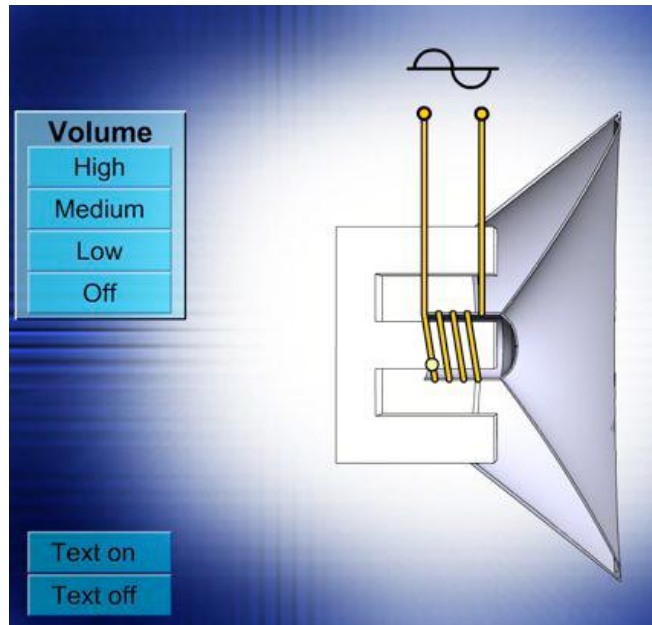
Read more!

Any questions?
Contact us at
lre-contact@eun.org

Users from different countries using the same “travel well” resource



Content that „travels well“



~~Starověký Řím - Historický vývoj římské říše~~

Období	Časové období	Významní osobnosti	Významní události	Přírodní podmínky
Období státního rozvoje	753 - 510 př. n. l.	• Romulus • Numa Pompilius • Servius Tullius	• Založení Říma • Založení Latinské ligy	• Úrodná půda • Dobrá poloha • Blízkost moře
Římská republika I. fáze	510 - 270 př. n. l.	• Publius Valerius Publicola • Lucius Junius Brutus • Marcus Junius Brutus • Gaius Julius Caesar	• První secesní válka • Druhá secesní válka • Galická válka • Dolnícká válka	• Úrodná půda • Dobrá poloha • Blízkost moře
Římská republika II. fáze	270 - 146 př. n. l.	• Publius Cornelius Scipio Africanus • Marcus Tullius Cicero • Marcus Junius Brutus • Gaius Julius Caesar	• První punská válka • Druhá punská válka • Třetí punská válka	• Úrodná půda • Dobrá poloha • Blízkost moře
Nový římský republikánský stádium	146 - 31 př. n. l.	• Marcus Junius Brutus • Gaius Julius Caesar • Marcus Tullius Cicero • Marcus Antonius • Octavianus • Marcus Aemilius Lepidus	• První punská válka • Druhá punská válka • Třetí punská válka	• Úrodná půda • Dobrá poloha • Blízkost moře
První římský imperiální stádium	31 př. n. l. - 284 n. l.	• Augustus • Tiberius • Caligula • Claudius • Nero • Galba • Otho • Vitellius • Vespasianus • Titus • Domitianus • Nerva • Trajanus • Hadrianus • Antoninus Pius • Marcus Aurelius • Commodus • Septimius Severus • Maximus Severus Alexander • Gordianus • Philippus Arabs • Diocletianus • Maximianus • Constantinus I. • Constantinus II. • Constantinus III. • Constantinus IV. • Constantinus V. • Constantinus VI. • Constantinus VII. • Constantinus VIII. • Constantinus IX. • Constantinus X. • Constantinus XI.	• První římský imperiální stádium • Druhé římské imperiální stádium • Třetí římské imperiální stádium	• Úrodná půda • Dobrá poloha • Blízkost moře

7 easy TW criteria

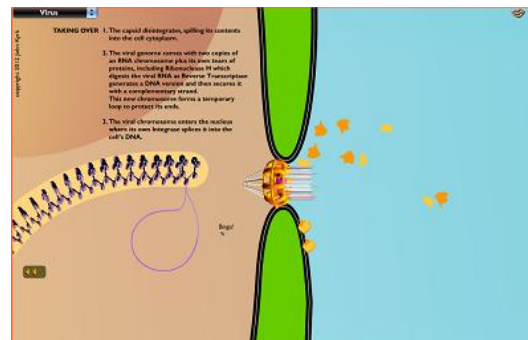
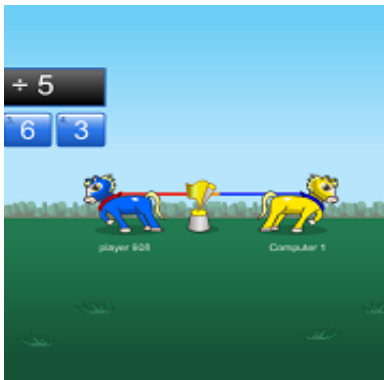
- ✓ Tested by teachers from 9 countries
- ✓ Applied on digital resource on LRE portal
- ✓ Freely available for anyone to re-use or further develop

Who can benefit from them?

- ✓ Teachers involved in any European projects
- ✓ Repository owners, publishers or vendors

Trans-national topics

Trans-national curriculum topics



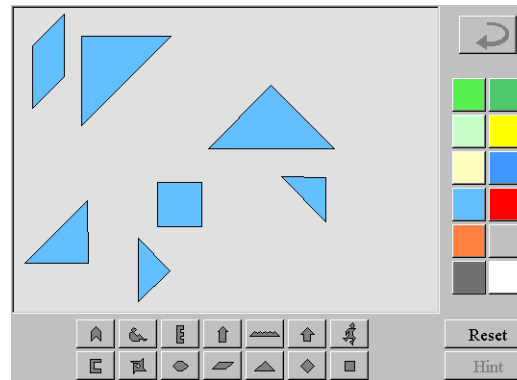
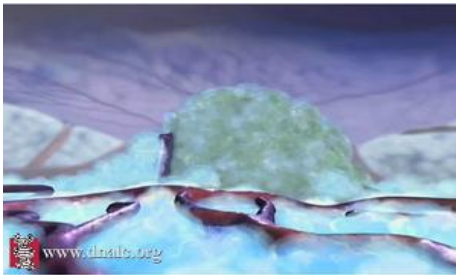
Examples:

<http://lreforschools.eun.org/web/guest/resource-details?resourceId=280919>

<http://lreforschools.eun.org/web/guest/resource-details?resourceId=400452>

Knowledge of a specific language is not needed

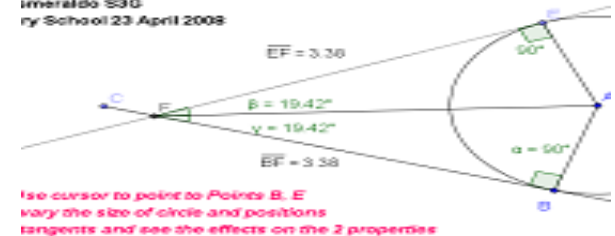
The resource can be used without having to translate accompanying texts and/or the resource may be available in at least 3 European languages.



Properties of Tangents To Circles

External Point of Circle - Two Properties Demonstrated
Tangents EF and BF are equal
External point F and centre A
is BFE between the tangents.

Emeraldo S30
Primary School 23 April 2008



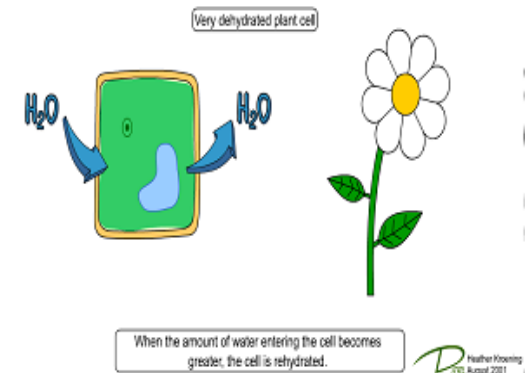
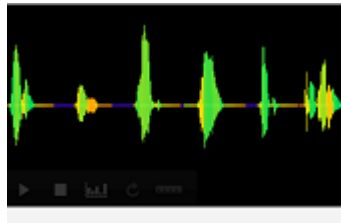
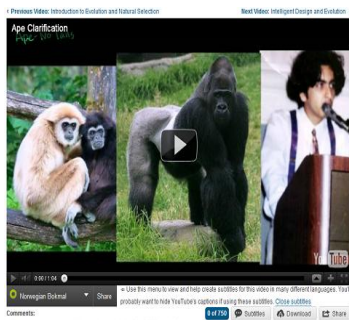
Examples:

<http://lreforschools.eun.org/web/guest/resource-details?resourceId=400117>

<http://lreforschools.eun.org/web/guest/resource-details?resourceId=264342>

Stored as a file type that is usable with generally available software

The resource can be used in any environment (online and off-line) and runs on multiple platforms (f.ex. IWB).



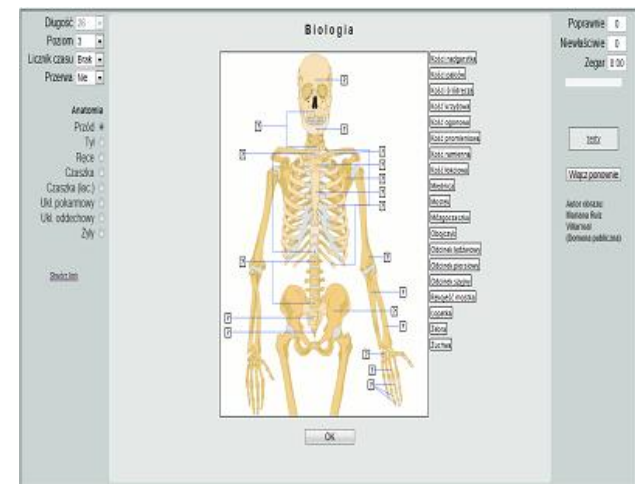
Examples:

<http://lreforschools.eun.org/web/guest/resource-details?resourceId=264832>

<http://lreforschools.eun.org/web/guest/resource-details?resourceId=250809>

Methodological support for teachers is not needed

Subject teachers can easily recognize how this resource meets their curriculum requirements or how this resource could be used in a teaching scenario without further instructions.



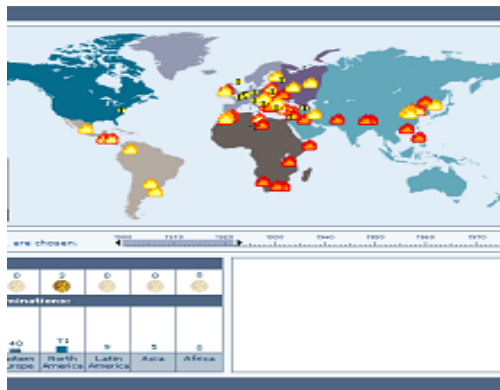
Examples:

<http://lreforschools.eun.org/web/guest/resource-details?resourceId=399084>

<http://lreforschools.eun.org/web/guest/resource-details?resourceId=401108>

Intuitive and easy to use

The resource is intuitive to use in the sense that it has a user-friendly interface and is easy to navigate for both teachers and students without having to read or translate complex operating instructions.



Examples:

<http://lreforschools.eun.org/web/guest/resource-details?resourceId=261871>

<http://lreforschools.eun.org/web/guest/resource-details?resourceId=280960>

Interactivity with or without feedback in a digital environment

This kind of resource invites or requires a significant degree of user input or engagement, other than just reading something on a page in an online or offline environment.



<http://lreforschools.eun.org/web/guest/resource-details?resourceId=248375>

<http://lreforschools.eun.org/web/guest/resource-details?resourceId=264849>

Clear license status

The user can easily find information about the license/rights (sometimes called Terms of Use, Copyright or Permissions) for this resource.



Examples:

<http://lreforschools.eun.org/web/guest/resource-details?resourceId=265528>

<http://lreforschools.eun.org/web/guest/resource-details?resourceId=399091>

Create! Share!

- ✓ Go to the LRE website!
- ✓ Search for DLR for chemistry! More than 2200! 420 TW!

eQNet: Quality Network for a European Learning Resource Exchange. The project was supported by the European Commission's Lifelong Learning Programme (Grant agreement N° 502857-LLP-1-2009-1-BE-COMENIUS-CNW).

Project eQNet: <http://eqnet.eun.org>

European Schoolnet: www.europeanschoolnet.org

LRE: <http://lreforschools.eun.org>

Czech Republic: Dům zahraničních služeb, www.dzs.cz/eun, euncr@naep.cz

Barbora Grečnerová

barbora.grecnerova@naep.cz

Thank you for your attention!

Credits:
Image taken from:
Dia, www.indire.it/dia

